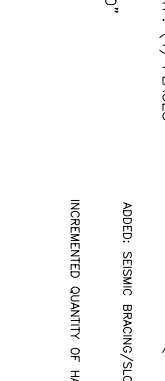
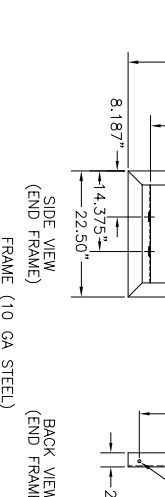
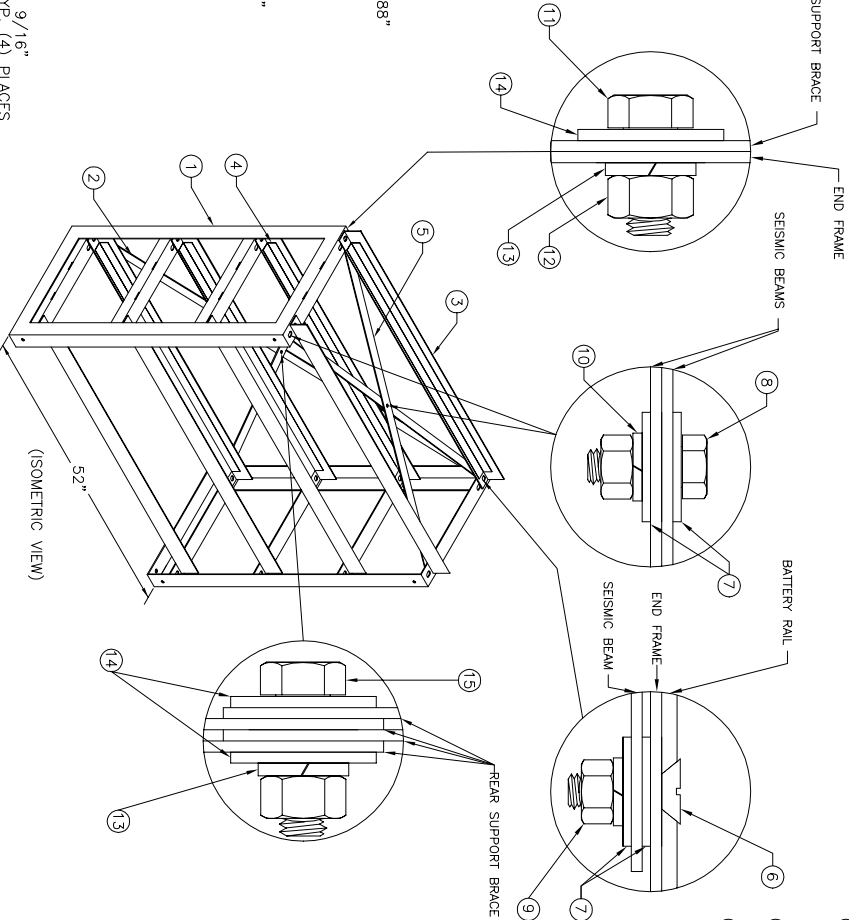
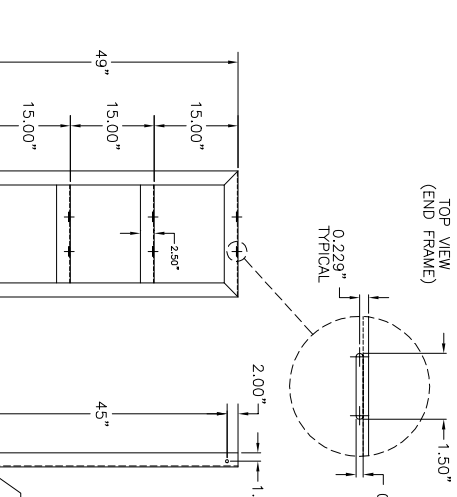
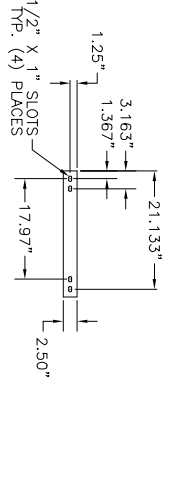
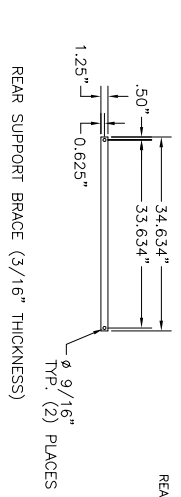
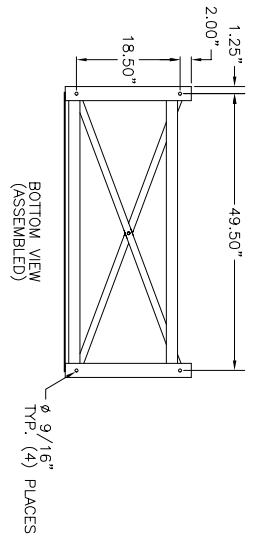
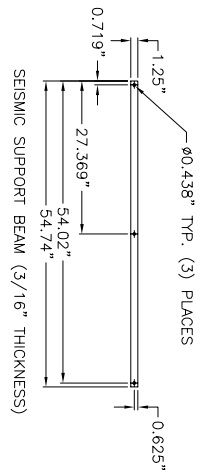
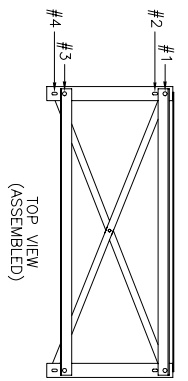
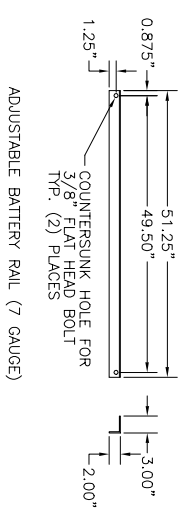


MAXIMUM NUMBER OF SLIM LINE BATTERIES PER RACK  
(NOTE: RACK WEIGHT PRIOR TO BATTERIES IS 204 LBS.)

MODEL #	CSL-12170	SL/SLF-12205	CSL-12801	SL/SLF-12105
RB52-4T	20	20	40	40

NOTE: A MINIMUM OF 6" OF SPACE IS NEEDED AROUND EACH SIDE OF RACK IN ORDER TO MEET UBC 97 SEISMIC CRITERIA.



**RACK ASSEMBLY INSTRUCTIONS**

- READ ALL INSTRUCTIONS FULLY BEFORE ATTEMPTING TO INSTALL OR SET UP RACKS.
- (A) CHECK RECEIVED PARTS AGAINST PARTS LIST BELOW.
- (B) RACK LOCATION SHOULD:
  1. AWAY FROM OUTSIDE SOURCES OF HEAT (DIRECT SUN- LIGHT, RADIATORS, STEAM PIPES ETC.)
  2. ON LEVEL GROUND.
  3. EASILY ACCESSIBLE FOR CELL READINGS.
- (C) MARK LOCATION ON FLOOR AND POSITION FRAMES.
- (D) INSTALL BRACES ON TO FRAMES AND HAND TIGHTEN NUTS.
- (E) INSTALL RAILS IN APPROPRIATE POSITION FOR BATTERY SYSTEM TO BE USED AND HAND TIGHTEN NUTS. ALL RAILS ARE TO BE INSTALLED ON THE #1 & #3 HOLES, AS SHOWN IN THE TOP VIEW.
- (F) CHECK THAT RAILS AND BRACES ARE IN CORRECT POSITION AND SQUARE RAIL WITH FRAME.
- (G) INSTALL RAIL INSULATION ON BOTH INSIDE SURFACES OF THE RAIL MAKING SURE THEY MEET AT THE BEND IN THE RAIL.
- (H) TIGHTEN ALL NUTS TO A 30 FT/LB TORQUE VALUE STARTING WITH BRACES FIRST, THEN RAILS.
- (I) \*BOLT FRAMES TO FLOOR. FOR UBC 97 ZONE FOUR CERTIFIED RACKS, A MINIMUM OF 6" OF SPACING IS NEEDED AROUND ALL SIDES OF RACK.
- (J) ALL MOUNTING SLOTS ARE 1/2" X 1" AND SUPPLIED WITH 3/8" HARDWARE KIT.
- (K) ALL RACKS ARE MADE OF STEEL ANGLE SUPPORTS AND ARE PAINTED WITH A TEXTURED IBM WHITE ELECTROSTATIC POWDER COAT.

SEISMIC ZONE	*ANCHORING COMPONENTS	SEISMIC SUPPORT BEAMS
1	4-Ø1/2"x6" ROD WITH E12 EPOXY CAPSULES	NOT REQUIRED
2A	4-Ø1/2"x6" ROD WITH E12 EPOXY CAPSULES	REQUIRED
2B	4-Ø1/2"x6" ROD WITH E12 EPOXY CAPSULES	REQUIRED
3	4-Ø1/2"x6" ROD WITH E12 EPOXY CAPSULES	REQUIRED
4	4-Ø1/2"x6" ROD WITH E12 EPOXY CAPSULES	REQUIRED

\*SEE ANCHORING INSTRUCTIONS DRAWING ANC-9001.

**HARDWARE KIT: HK-0008**

15	1/2" X 1 1/2" HEX HEAD SCREW	1
14	1/2" FLAT WASHER	6
13	1/2" SPLIT LOCK WASHER	5
12	1/2" HEX NUT	5
11	1/2" X 1 1/4" HEX HEAD SCREW	4
10	3/8" SPLIT LOCK WASHER	21
9	3/8" HEX NUT	21
8	3/8" X 1 1/2" HEX HEAD SCREW	5
7	3/8" FLAT WASHER	30
6	3/8" X 1" COUNTERSUNK FLAT HEAD SCREW	16

NO.	DESCRIPTION:	QTY.	PART NO.:
5	SEISMIC SUPPORT BEAMS	2	RB52-SSB
4	BATTERY RAIL INSULATION KIT	1	RB52-4T-BRI
3	ADJUSTABLE BATTERY RAIL	8	RB52-ABR
2	REAR SUPPORT BRACE	4	RB52-4T-B
1	END FRAME	2	RB52-4T-RF

NO.	DATE	BY	SCALE
1	2/6/96		NONE

POWER BATTERY COMPANY INC.

**POWER**

RB52-4T ASSEMBLY DRAWING  
FOUR TIER SEISMIC ZONE 1-4  
CERTIFIED BATTERY RACK

DRAWING NO.: RB52-4T{G}

ADDED: SEISMIC BRACING/SLOTS FOR STRAPPING/HARDWARE KIT & DETAIL/ANCHORING COMPONENTS/1/2" HARDWARE.  
INCREMENTED QUANTITY OF HARDWARE NUMBERED 7-10, BY TWO PIECES EACH.  
INCREMENTED QUANTITY OF HARDWARE NUMBERED 8-10, BY TWO PIECES EACH. INCREMENTED #7, BY FOUR PIECES.  
MODIFIED RACK ASSEMBLY INSTRUCTIONS PART 1, ADDED NOTE FOR 6" SPACING.  
ADDED HIDDEN LINES AND REARRANGED DIMENSIONING TO BACK VIEW OF END FRAME.